

VIRTUAL SUPPORT INFORMATION

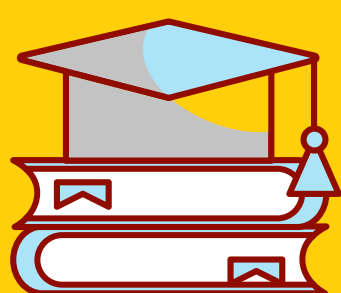


LIBRARY SUPPORT:

If you have any questions about remote learning at PCC or how to check out an item, don't hesitate to ask a librarian on the [**Library Remote Services**](#) page. You may follow us on Instagram @pcc.library We are here to help you!

LAPTOP AND WIFI ACCESS:

Do you need a laptop? You may check one out on a first-come, first served basis. For Wifi access, the college has opened Lot 3 on campus for students to use their mobile devices while parked. For more info on laptops and WiFi access visit the [**Remote Campus Information for Students**](#) page.



ACADEMIC COUNSELING:

Academic Counseling is still available! Ask about Prerequisites, Graduation Petitions, or advice about your major. You can make a Phone or Virtual appointment through the [**PCC Counseling**](#) website or call **855-468-6722**.

HOW TO TRANSFER:

Transfer Center is here to help! You may meet with a University representative, get application help, or get informed about important deadlines. Visit the [**Transfer Center**](#) site or call at **626-585-7287**. Follow them on Instagram @pcctransfercenter for instant news.



LANCER FOOD PANTRY:

The temporary food pantry is located at Knox Presbyterian Church at 225 S. Hill Ave, Pasadena 91106. Receive help for CalFresh application assistance and info on grocery gift cards. Visit the [**PCCLancer Pantry**](#) site or call **909-257-7434** for more information!

FREEMAN CAREER CENTER:

You may meet with a career counselor, explore internship opportunities, get help with building your resume, as well as finding a job. Set up an appointment today on the [**PCC Freeman Center**](#) site or call **626-585-3377**.



GO LANCERS!

OTHER SUPPORT SERVICES

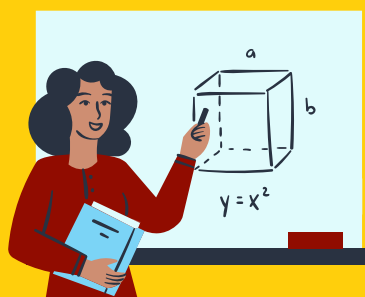


TUTORING:

Online tutoring is available if you need help! Search by subject or by Success Center. Seek help within a variety of subjects like Anthropology, Biology, Economics, and more! Visit the [PCC Tutoring and Academic Support](#) site for more info!

WRITING CENTER:

The Writing Support Center is available if you need help! From an English assignment to your Transfer essay, receive one-on-one support for grammar, punctuation, MLA, and APA to improve your writing skills. Visit the [Writing Support Center](#) site or call **626-594-5186** for more info.



MATH SUCCESS CENTER:

Do you need help with Statistics, Calculus, or Algebra? The MSC is still here for you! They offer tutoring and workshops to help students for all math needs. Visit the [PCC Math Success Center](#) site or call at **626-585-7458** for more info.

PUBLIC LIBRARIES:

If you are having issues finding resources or items for a class, there are local libraries that may offer curbside pick up.

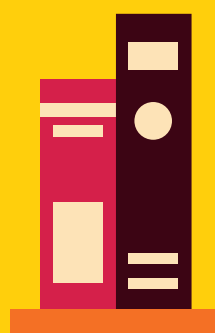
[Pasadena Public Library](#) has a variety of items from books to DVDs that may be helpful for research.

[Los Angeles Public Library](#) is virtually open to the public and has branches throughout LA.

[Los Angeles County Libraries](#) have a number of branches that may be closer to your residence.

[Altadena Public Library](#) just north of Pasadena is Altadena. They are open for limited services and limited browsing.

Please click on their links for more information!



VIRTUAL SUPPORT:

If you have any questions on virtual or student support, visit the [PCC Virtual FAQ page](#), Email GoToPcc@pasadena.edu, or call **855-GO-TO-PCC**. You may also contact the library and leave a message on the Circ line **626-585-7174** or chat with a librarian online.



GO LANCERS!